



# Product Catalogue

March 2019

## Table of contents:

Non-return valves	2
Windscreen spray nozzles	6
Tees connectors	8
Elbow connectors	14
Straight connectors	19
Reducer connectors	26
Air bleed connectors	29

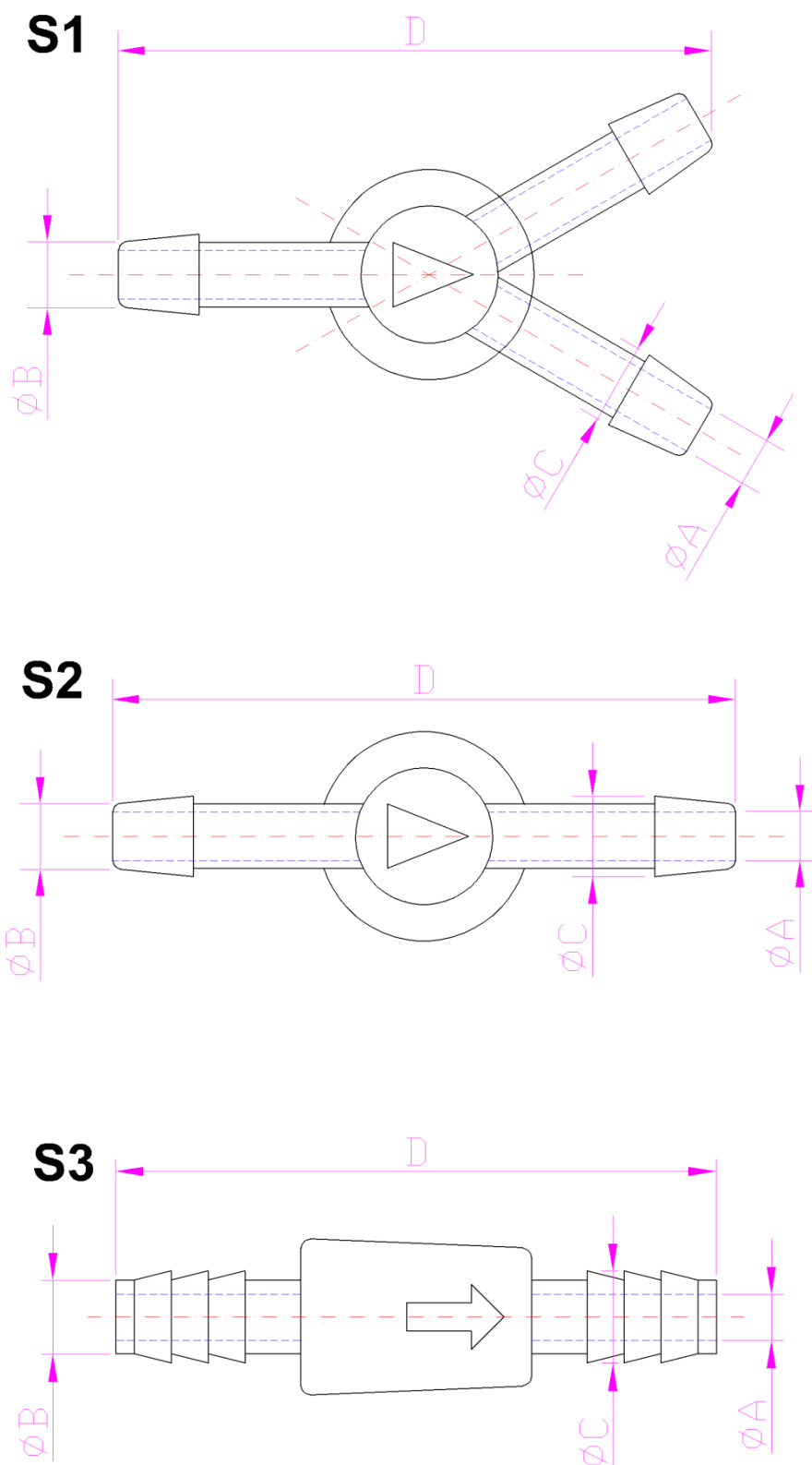
**Moto-Mark Marek Krasinski**

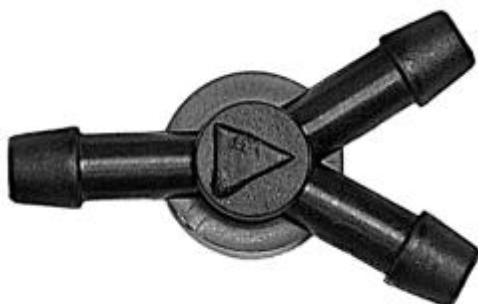
Laska 24, 95-050 Konstantynow Lodzki

tel./fax +48 42211-18-11

e-mail: [biuro@moto-mark.com](mailto:biuro@moto-mark.com)

## Non-return valves





Product	Non-return valve
Hose inner diameter	4-5mm
Product number	Z-0005
OEM number	7787593 (7667888)
Application	Automotive windscreen spraying system, hydraulic as well as industrial air and fluid flow applications.
Material	Polypropylene (PP-TD)
Dimensions [mm]	S1: A-3, B-4, C-5,5, D-34



Product	Non-return valve
Hose inner diameter	4-5mm
Product number	Z-10005
OEM number	7667887
Application	Automotive windscreen spraying system, hydraulic as well as industrial air and fluid flow applications.
Material	Polypropylene (PP-TD)
Dimensions [mm]	S2: A-3, B-4, C-5,5, D-35



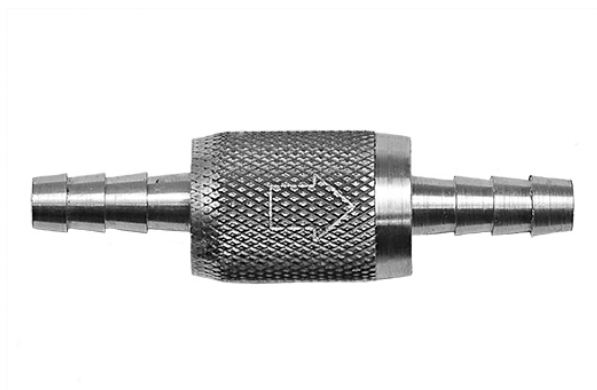
Product	Non-return valve
Hose inner diameter	6mm
Product number	Z-0006
Application	Automotive petrol systems, hydraulic as well as industrial air and fluid flow applications.
Material	Polyethylene (HDPE)
Dimensions [mm]	S3: A-4,5, B-6, C-7, D-60



Product	Non-return valve
Hose inner diameter	8mm
Product number	Z-0008
Application	Automotive petrol systems, hydraulic as well as industrial air and fluid flow applications.
Material	Polyethylene (HDPE)
Dimensions [mm]	S3: A-5, B-8, C-9, D-60



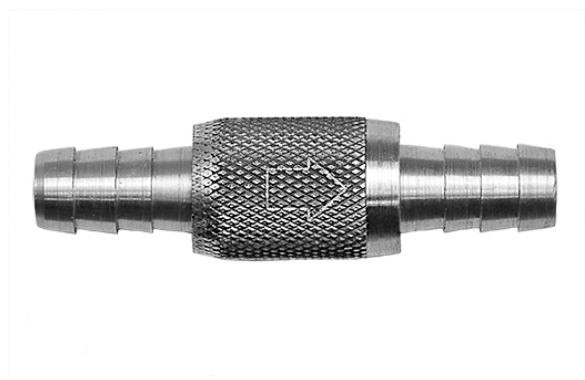
Product	Non-return valve
Hose inner diameter	10mm
Product number	Z-0010
Application	Automotive petrol systems, hydraulic as well as industrial air and fluid flow applications.
Material	Polyethylene (HDPE)
Dimensions [mm]	S3: A-7, B-10, C-11, D-64



Product	Non-return valve
Hose inner diameter	6mm
Product number	Z-10006
Application	Automotive petrol systems, hydraulic as well as industrial air and fluid flow applications.
Material	Aluminium
Dimensions [mm]	S3: A-5, B-6, C-7, D-64



Product	Non-return valve
Hose inner diameter	8mm
Product number	Z-10008
Application	Automotive petrol systems, hydraulic as well as industrial air and fluid flow applications.
Material	Aluminium
Dimensions [mm]	S3: A-6, B-8, C-9, D-64



Product	Non-return valve
Hose inner diameter	10mm
Product number	Z-10010
Application	Automotive petrol systems, hydraulic as well as industrial air and fluid flow applications.
Material	Aluminium
Dimensions [mm]	S3: A-6,5, B-10, C-11, D-64

## Windscreen spray nozzles



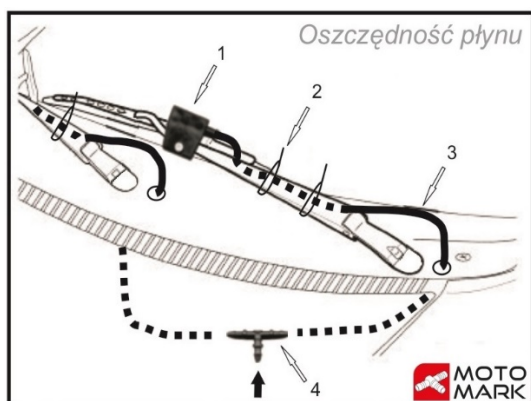
Product	Windscreen wiper installed spray nozzles
Product number	D-0001
Application	Automotive, hydraulic as well as industrial air and fluid flow applications.
Material	Polypropylene (PP-TD)



Product	Windscreen spray nozzles
Product number	D-0002
OEM number	9.63.5/1820360
Application	Automotive, hydraulic as well as industrial air and fluid flow applications.
Material	Polypropylene (PP-TD)



Product	Windscreen spray nozzles
Product number	D-0003
OEM number	9.63.6/7687086
Application	Automotive, hydraulic as well as industrial air and fluid flow applications.
Material	Polypropylene (PP-TD)



Product	Wiper arm installed windscreen spray nozzles kit
Product number	D-0004
Application	All types of cars and trucks. Content of installation kit: 1. Wiper arm spraying nozzles 2pcs. 2. Plastic clamps 6pcs. 3. Silicone elastic hose 1.7m 4. Tees 4-5mm 1pcs.

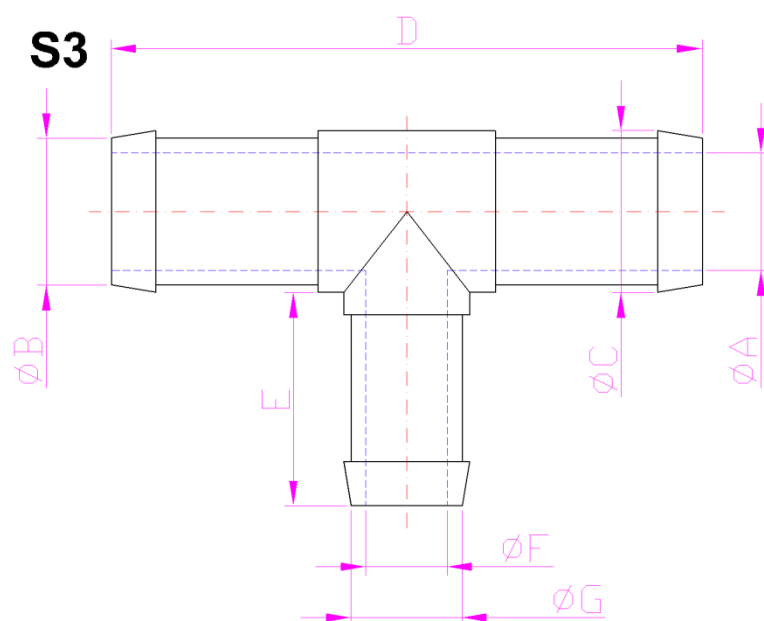
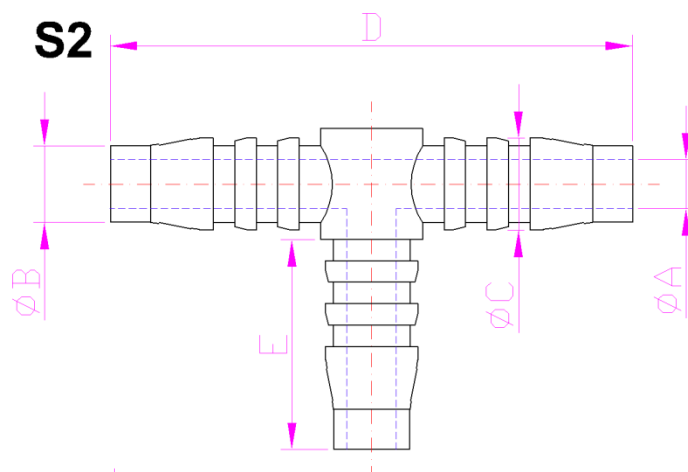
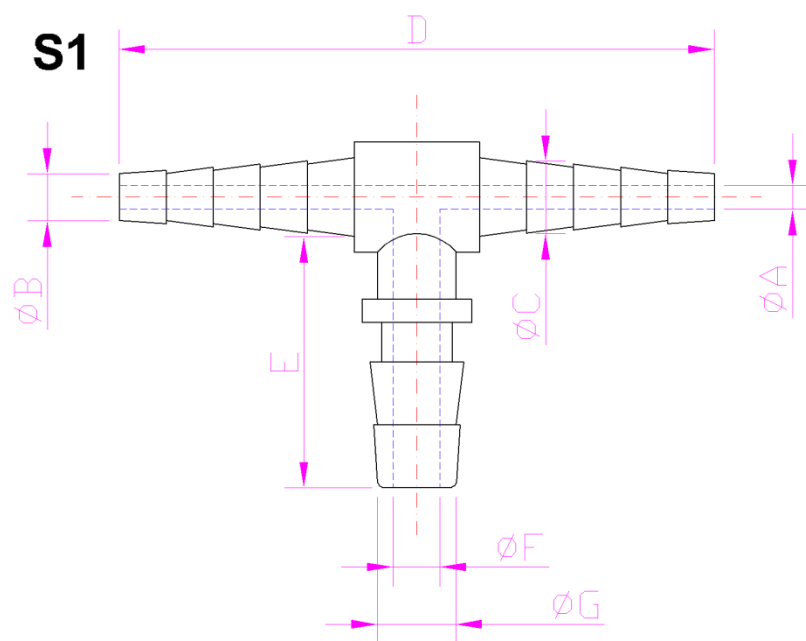


Product	Windscreen spray nozzles
Product number	D-0005
Application	Automotive, hydraulic as well as industrial air and fluid flow applications.
Material	Polypropylene (PP-TD)



Product	Windscreen spray nozzles
Product number	D-0006
Application	Automotive, hydraulic as well as industrial air and fluid flow applications.
Material	Polypropylene (PP-TD)

## Tees connectors



## Moto-Mark – product catalogue



Product	Tees connector
Hose inner diameter	3mm
Product number	T-0003
Application	Automotive flow systems, windscreen washing systems, hydraulic as well as industrial air and fluid flow applications.
Material	Polypropylene (PP-TD)
Dimensions [mm]	S2: A-2, B-3, C-5, D-37, E-15



Product	Tees connector
Hose inner diameter	3 and 5mm
Product number	T-0305
Application	Automotive flow systems, windscreen washing systems, hydraulic as well as industrial air and fluid flow applications.
Material	Polypropylene (PP-TD)
Dimensions [mm]	S1: A-2, B-3, C-5, D-37, E-16, F-3, G-5



Product	Tees connector
Hose inner diameter	4-5mm
Product number	T-0005
OEM number	14583087
Application	Automotive flow systems, windscreen washing systems, hydraulic as well as industrial air and fluid flow applications.
Material	Polypropylene (PP-TD)
Dimensions [mm]	S2: A-3, B-4, C-5,5, D-37, E-16



Product	Tees connector
Hose inner diameter	5 and 6mm
Product number	T-0506
Application	Automotive flow systems, windscreen washing systems, hydraulic as well as industrial air and fluid flow applications.
Material	Polypropylene (PP-TD)
Dimensions [mm]	S1: A-3, B-5, C-6, D-35, E-18, F-4, G-6



Product	Tees connector
Hose inner diameter	6mm
Product number	T-0006
Application	Automotive flow systems, windscreen washing systems, hydraulic as well as industrial air and fluid flow applications.
Material	Polypropylene (PP-TD)
Dimensions [mm]	S2: A-4, B-6, C-7, D-45, E-18



Product	Tees connector for petrol systems
Hose inner diameter	6mm
Product number	T-10006
Application	Automotive petrol systems, hydraulic as well as industrial air and fluid flow applications.
Material	Polyoxymethylene (POM)
Dimensions [mm]	S2: A-4, B-6, C-7, D-45, E-18



Product	Tees connector
Hose inner diameter	6 and 8mm
Product number	T-0608
Application	Automotive flow systems, windscreen washing systems, hydraulic as well as industrial air and fluid flow applications.
Material	Polypropylene (PP-TD)
Dimensions [mm]	S1: A-4, B-6, C-7, D-37, E-17, F-6, G-8



Product	Tees connector
Hose inner diameter	8mm
Product number	T-0008
Application	Automotive flow systems, windscreen washing systems, hydraulic as well as industrial air and fluid flow applications.
Material	Polypropylene (PP-TD)
Dimensions [mm]	S2: A-6, B-8, C-10, D-53, E-20

## Moto-Mark – product catalogue



Product	Tees connector for petrol systems
Hose inner diameter	8mm
Product number	T-10008
Application	Automotive petrol systems, hydraulic as well as industrial air and fluid flow applications.
Material	Polyoxymethylene (POM)
Dimensions [mm]	S2: A-6, B-8, C-10, D-60, E-24



Product	Tees connector
Hose inner diameter	10mm
Product number	T-0010
Application	Automotive, hydraulic as well as industrial air and fluid flow applications.
Material	Polypropylene (PP-TD)
Dimensions [mm]	S2: A-8, B-10, C-11,5, D-60, E-23



Product	Tees connector for petrol systems
Hose inner diameter	10mm
Product number	T-10010
Application	Automotive petrol systems, hydraulic as well as industrial air and fluid flow applications.
Material	Polyoxymethylene (POM)
Dimensions [mm]	S2: A-10, B-12, C-13, D-62, E-23



Product	Tees connector
Hose inner diameter	12mm (1/2")
Product number	T-0012
Application	Automotive, hydraulic as well as industrial air and fluid flow applications.
Material	Polypropylene (PP-TD)
Dimensions [mm]	S2: A-10, B-12, C-13, D-62, E-23



Product	Tees connector for petrol systems
Hose inner diameter	12mm (1/2")
Product number	T-10012
Application	Automotive petrol systems, hydraulic as well as industrial air and fluid flow applications.
Material	Polyoxymethylene (POM)
Dimensions [mm]	S2: A-10, B-12, C-13, D-62, E-23



Product	Tees connector
Hose inner diameter	15-16mm
Product number	T-0016
Application	Automotive, hydraulic as well as industrial air and fluid flow applications.
Material	Polyamide (PA)
Dimensions [mm]	S2: A-10, B-15, C-16,5, D-67, E-30



Product	Tees connector
Hose inner diameter	16 and 19mm
Product number	T-1619
Application	Automotive, hydraulic as well as industrial air and fluid flow applications.
Material	Polyamide (PA)
Dimensions [mm]	S3: A-14, B-19, C-21, D-75, E-30, F-11, G-15



Product	Tees connector
Hose inner diameter	18mm (3/4")
Product number	T-0018
Application	Automotive, hydraulic as well as industrial air and fluid flow applications.
Material	Polypropylene (PP-TD)
Dimensions [mm]	S2: A-14, B-18, C-19, D-73, E-30



Product	Tees connector
Hose inner diameter	20mm
Product number	T-0020
Application	Automotive, hydraulic as well as industrial air and fluid flow applications.
Material	Polypropylene (PP-TD)
Dimensions [mm]	S2: A-16, B-20, C-21,5, D-75, E-28

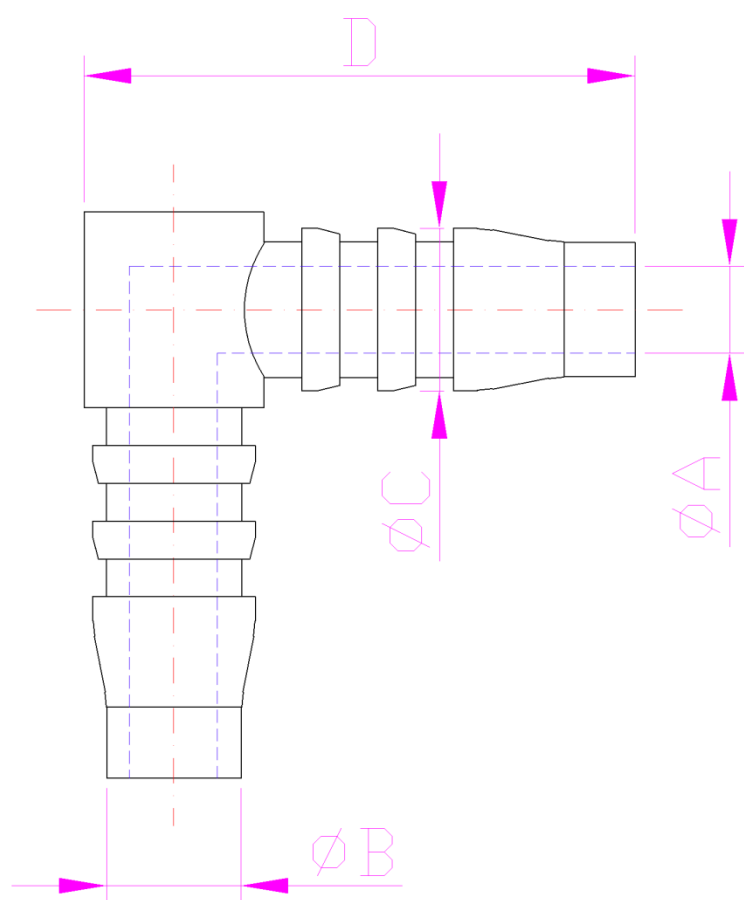


Product	Tees connector
Hose inner diameter	25mm
Product number	T-0025
Application	Automotive, hydraulic as well as industrial air and fluid flow applications.
Material	Polyamide (PA)
Dimensions [mm]	S2: A-17, B-25, C-27, D-88, E-29



Product	Tees connector
Hose inner diameter	16 and 32 mm
Product number	T-1632
Application	Automotive, hydraulic as well as industrial air and fluid flow applications.
Material	Polyamide (PA)
Dimensions [mm]	S3: A-24, B-31, C-33, D-74, E-22, F-11, G-16

## Elbow connectors





Product	Elbow connector
Hose inner diameter	3mm
Product number	K-0003
Application	Automotive flow systems, windscreen washing systems, hydraulic as well as industrial air and fluid flow applications.
Material	Polypropylene (PP-TD)
Dimensions [mm]	A-2, B-3, C-5, D-22



Product	Elbow connector
Hose inner diameter	4-5mm
Product number	K-0005
Application	Automotive flow systems, windscreen washing systems, hydraulic as well as industrial air and fluid flow applications.
Material	Polypropylene (PP-TD)
Dimensions [mm]	A-3, B-4, C-5,5, D-21



Product	Elbow connector
Hose inner diameter	6mm
Product number	K-0006
Application	Automotive flow systems, windscreen washing systems, hydraulic as well as industrial air and fluid flow applications.
Material	Polypropylene (PP-TD)
Dimensions [mm]	A-4, B-6, C-7, D-27



Product	Elbow connector for petrol systems
Hose inner diameter	6mm
Product number	K-10006
Application	Automotive petrol systems, hydraulic as well as industrial air and fluid flow applications.
Material	Polyoxymethylene (POM)
Dimensions [mm]	A-4, B-6, C-7, D-27



Product	Elbow connector
Hose inner diameter	8mm
Product number	K-0008
Application	Automotive flow systems, windscreen washing systems, hydraulic as well as industrial air and fluid flow applications.
Material	Polypropylene (PP-TD)
Dimensions [mm]	A-6, B-8, C-10, D-35



Product	Elbow connector for petrol systems
Hose inner diameter	8mm
Product number	K-10008
Application	Automotive petrol systems, hydraulic as well as industrial air and fluid flow applications.
Material	Polyoxymethylene (POM)
Dimensions [mm]	A-6, B-8, C-10, D-35



Product	Elbow connector
Hose inner diameter	10mm
Product number	K-0010
Application	Automotive, hydraulic as well as industrial air and fluid flow applications.
Material	Polypropylene (PP-TD)
Dimensions [mm]	A-8, B-10, C-11,5, D-37



Product	Elbow connector for petrol systems
Hose inner diameter	10mm
Product number	K-10010
Application	Automotive petrol systems, hydraulic as well as industrial air and fluid flow applications.
Material	Polyoxymethylene (POM)
Dimensions [mm]	A-8, B-10, C-11,5, D-37



Product	Elbow connector
Hose inner diameter	12mm (1/2")
Product number	K-0012
Application	Automotive, hydraulic as well as industrial air and fluid flow applications.
Material	Polypropylene (PP-TD)
Dimensions [mm]	A-10, B-12, C-13, D-39



Product	Elbow connector for petrol systems
Hose inner diameter	12mm (1/2")
Product number	K-10012
Application	Automotive petrol systems, hydraulic as well as industrial air and fluid flow applications.
Material	Polyoxymethylene (POM)
Dimensions [mm]	A-10, B-12, C-13, D-39



Product	Elbow connector
Hose inner diameter	15-16mm
Product number	K-0016
Application	Automotive, hydraulic as well as industrial air and fluid flow applications.
Material	Polyamide (PA)
Dimensions [mm]	A-10, B-15, C-16,5, D-44



Product	Elbow connector
Hose inner diameter	18mm (3/4")
Product number	K-0018
Application	Automotive, hydraulic as well as industrial air and fluid flow applications.
Material	Polypropylene (PP-TD)
Dimensions [mm]	A-14, B-18, C-19, D-46

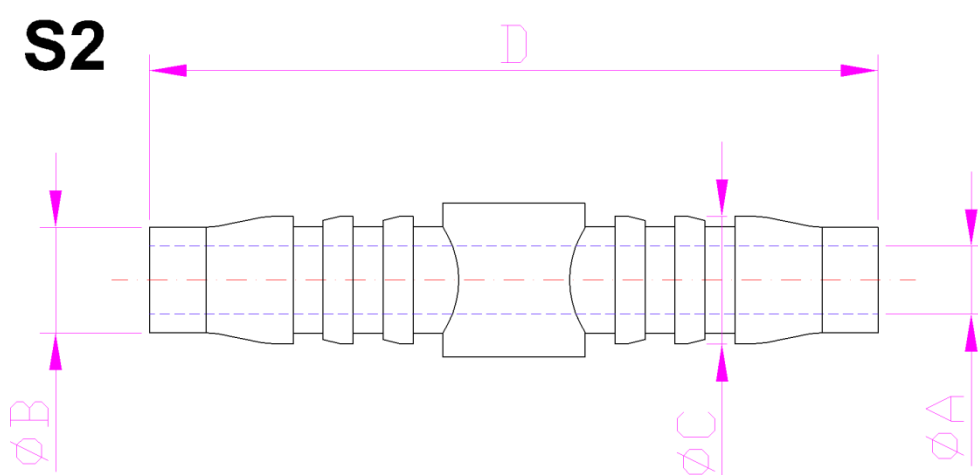
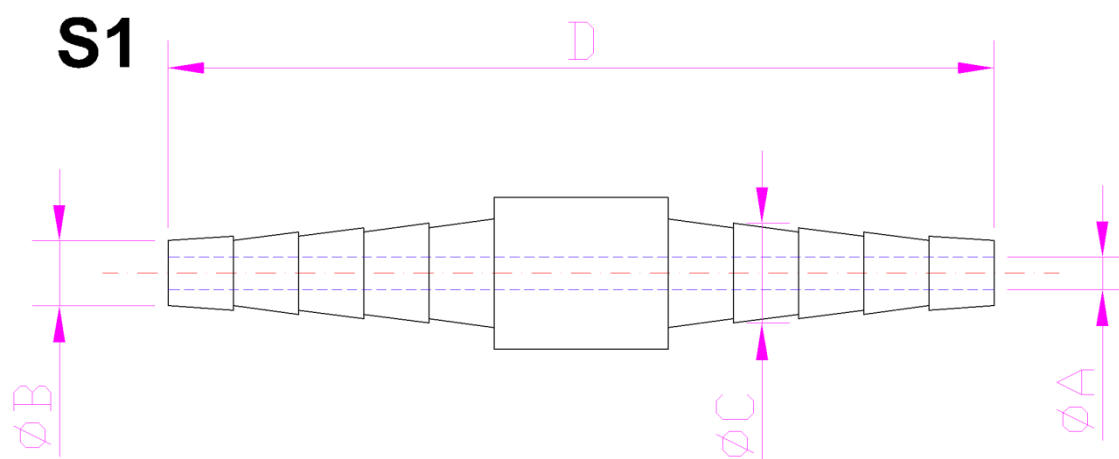


Product	Elbow connector
Hose inner diameter	20mm
Product number	K-0020
Application	Automotive, hydraulic as well as industrial air and fluid flow applications.
Material	Polypropylene (PP-TD)
Dimensions [mm]	A-16, B-20, C-21,5, D-48



Product	Elbow connector
Hose inner diameter	25mm
Product number	K-0025
Application	Automotive, hydraulic as well as industrial air and fluid flow applications.
Material	Polyamide (PA)
Dimensions [mm]	A-17, B-25, C-27, D-59

## Straight connectors



## Moto-Mark – product catalogue



Product	Straight connector
Hose inner diameter	3mm
Product number	L-0003
Application	Automotive flow systems, windscreen washing systems, hydraulic as well as industrial air and fluid flow applications.
Material	Polypropylene (PP-TD)
Dimensions [mm]	S1: A-2, B-3, C-5, D-37



Product	Straight connector
Hose inner diameter	4-5mm
Product number	L-0005
Application	Automotive flow systems, windscreen washing systems, hydraulic as well as industrial air and fluid flow applications.
Material	Polypropylene (PP-TD)
Dimensions [mm]	S2: A-3, B-4, C-5,5, D-37



Product	Straight connector
Hose inner diameter	4-5mm
Product number	L-20005
Application	Automotive flow systems, windscreen washing systems, hydraulic as well as industrial air and fluid flow applications.
Material	Polypropylene (PP-TD)
Dimensions [mm]	S2: A-3, B-5, C-6, D-35



Product	Straight connector
Hose inner diameter	6mm
Product number	L-0006
Application	Automotive flow systems, windscreen washing systems, hydraulic as well as industrial air and fluid flow applications.
Material	Polypropylene (PP-TD)
Dimensions [mm]	S2: A-4, B-6, C-7, D-40

## Moto-Mark – product catalogue



Product	Straight connector
Hose inner diameter	6mm
Product number	L-20006
Application	Automotive flow systems, windscreen washing systems, hydraulic as well as industrial air and fluid flow applications.
Material	Polypropylene (PP-TD)
Dimensions [mm]	S2: A-4, B-6, C-7, D-37



Product	Straight connector for petrol systems
Hose inner diameter	6mm
Product number	L-10006
Application	Automotive petrol systems, hydraulic as well as industrial air and fluid flow applications.
Material	Polyoxymethylene (POM)
Dimensions [mm]	S2: A-4, B-6, C-7, D-40



Product	Straight connector
Hose inner diameter	8mm
Product number	L-0008
Application	Automotive flow systems, windscreen washing systems, hydraulic as well as industrial air and fluid flow applications.
Material	Polypropylene (PP-TD)
Dimensions [mm]	S2: A-6, B-8, C-10, D-53



Product	Straight connector for petrol systems
Hose inner diameter	8mm
Product number	L-10008
Application	Automotive petrol systems, hydraulic as well as industrial air and fluid flow applications.
Material	Polyoxymethylene (POM)
Dimensions [mm]	S2: A-6, B-8, C-10, D-60

## Moto-Mark – product catalogue



Product	Straight connector
Hose inner diameter	10mm
Product number	L-20010
Application	Automotive, hydraulic as well as industrial air and fluid flow applications.
Material	Polypropylene (PP-TD)
Dimensions [mm]	S2: A-8, B-10, C-11, D-39



Product	Straight connector
Hose inner diameter	10mm
Product number	L-0010
Application	Automotive, hydraulic as well as industrial air and fluid flow applications.
Material	Polypropylene (PP-TD)
Dimensions [mm]	S2: A-8, B-10, C-11,5, D-60



Product	Straight connector for petrol systems
Hose inner diameter	10mm
Product number	L-10010
Application	Automotive petrol systems, hydraulic as well as industrial air and fluid flow applications.
Material	Polyethylene (HDPE)
Dimensions [mm]	S2: A-8, B-10, C-11, D-39



Product	Straight connector
Hose inner diameter	12mm (1/2")
Product number	L-20012
Application	Automotive, hydraulic as well as industrial air and fluid flow applications.
Material	Polypropylene (PP-TD)
Dimensions [mm]	S2: A-9, B-12, C-13, D-39

## Moto-Mark – product catalogue



Product	Straight connector
Hose inner diameter	12mm (1/2")
Product number	L-0012
Application	Automotive, hydraulic as well as industrial air and fluid flow applications.
Material	Polypropylene (PP-TD)
Dimensions [mm]	S2: A-10, B-12, C-13, D-62



Product	Straight connector for petrol systems
Hose inner diameter	12mm
Product number	L-10012
Application	Automotive petrol systems, hydraulic as well as industrial air and fluid flow applications.
Material	Polyethylene (HDPE)
Dimensions [mm]	S2: A-9, B-12, C-13, D-39



Product	Straight connector
Hose inner diameter	16mm
Product number	L-20016
Application	Automotive, hydraulic as well as industrial air and fluid flow applications.
Material	Polypropylene (PP-TD)
Dimensions [mm]	S2: A-12, B-16, C-17,5, D-50



Product	Straight connector
Hose inner diameter	16mm
Product number	L-0016
Application	Automotive, hydraulic as well as industrial air and fluid flow applications.
Material	Polyamide (PA)
Dimensions [mm]	S2: A-11, B-16, C-17,5, D-47

## Moto-Mark – product catalogue



Product	Straight connector
Hose inner diameter	18mm (3/4")
Product number	L-0018
Application	Automotive, hydraulic as well as industrial air and fluid flow applications.
Material	Polypropylene (PP-TD)
Dimensions [mm]	S2: A-14, B-18, C-19, D-51



Product	Straight connector
Hose inner diameter	18mm (3/4")
Product number	L-10018
Application	Automotive, hydraulic as well as industrial air and fluid flow applications.
Material	Polypropylene (PP-TD)
Dimensions [mm]	S2: A-14, B-18, C-19, D-73



Product	Straight connector
Hose inner diameter	20mm
Product number	L-0020
Application	Automotive, hydraulic as well as industrial air and fluid flow applications.
Material	Polypropylene (PP-TD)
Dimensions [mm]	S2: A-16, B-20, C-21,5, D-60



Product	Straight connector
Hose inner diameter	20mm
Product number	L-10020
Application	Automotive, hydraulic as well as industrial air and fluid flow applications.
Material	Polypropylene (PP-TD)
Dimensions [mm]	S2: A-16, B-20, C-21,5, D-75

## Moto-Mark – product catalogue



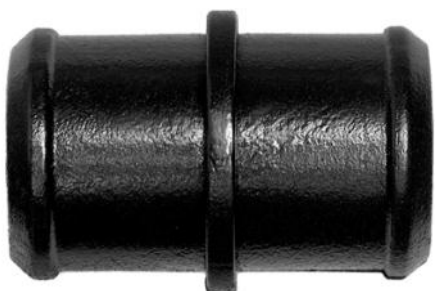
Product	Straight connector
Hose inner diameter	22mm
Product number	L-0022
Application	Automotive, hydraulic as well as industrial air and fluid flow applications.
Material	Polyamide (PA)
Dimensions [mm]	S2: A-18, B-22, C-23,5, D-55



Product	Straight connector
Hose inner diameter	25mm
Product number	L-0025
Application	Automotive, hydraulic as well as industrial air and fluid flow applications.
Material	Polyamide (PA)
Dimensions [mm]	S2: A-17, B-25, C-27, D-88

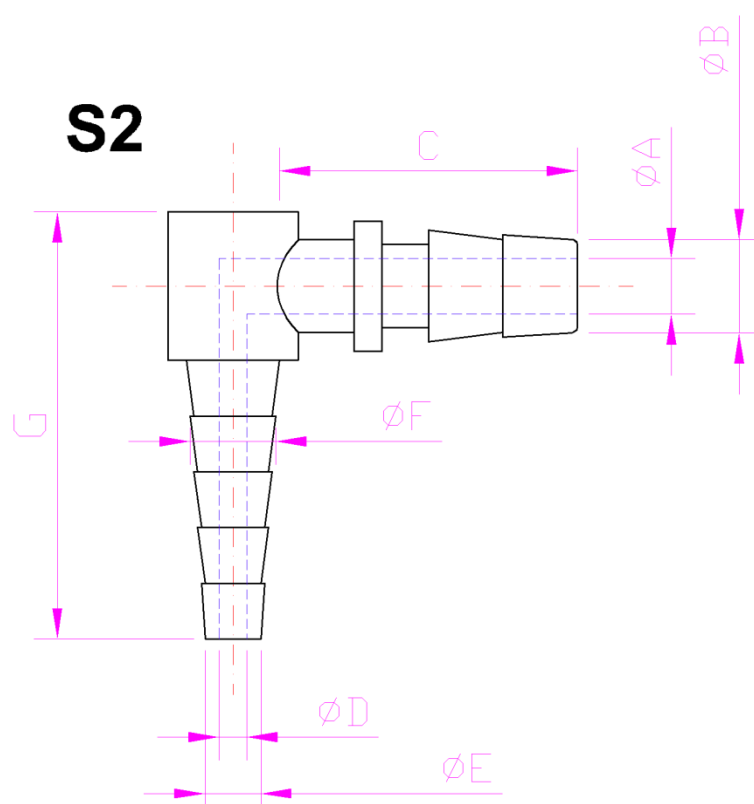
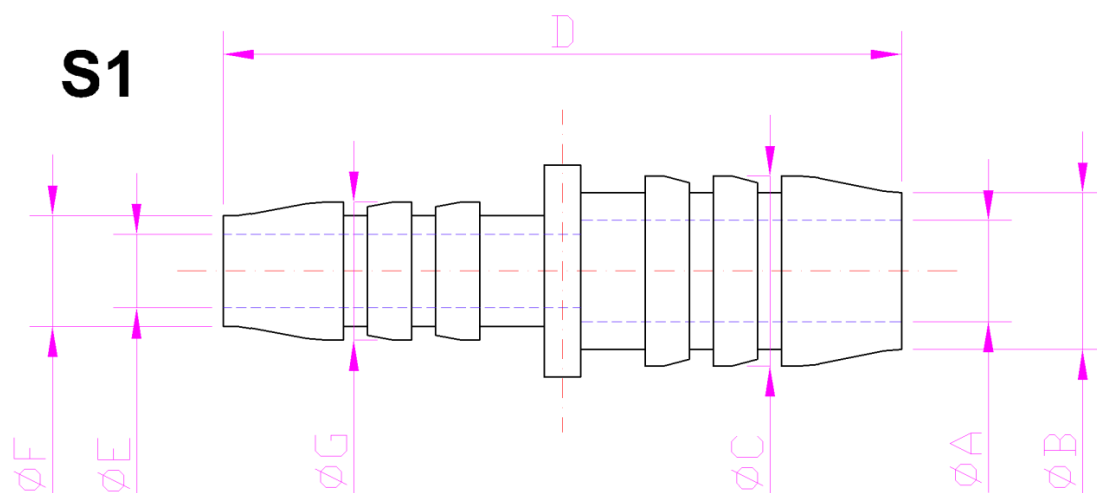


Product	Straight connector
Hose inner diameter	32mm
Product number	L-0032
Application	Automotive, hydraulic as well as industrial air and fluid flow applications.
Material	Polyamide (PA)
Dimensions [mm]	S2: A-25, B-32, C-33,5, D-65



Product	Straight connector
Hose inner diameter	36mm
Product number	L-0036
Application	Automotive, hydraulic as well as industrial air and fluid flow applications.
Material	Polyamide (PA)
Dimensions [mm]	S2: A-28, B-36, C-38, D-64

## Reducer connectors





Product	Reducer elbow connector
Hose inner diameter	3 and 5mm
Product number	K-0305
Application	Automotive flow systems, windscreen washing systems, hydraulic as well as industrial air and fluid flow applications.
Material	Polypropylene (PP-TD)
Dimensions [mm]	S2: A-3, B-5, C-16, D-2, E-3, F-5, G-22



Product	Reducer elbow connector
Hose inner diameter	5 and 6mm
Product number	K-0506
Application	Automotive flow systems, windscreen washing systems, hydraulic as well as industrial air and fluid flow applications.
Material	Polypropylene (PP-TD)
Dimensions [mm]	S2: A-3, B-5, C-18, D-4, E-6, F-7, G-21



Product	Reducer straight connector
Hose inner diameter	5 and 6mm
Product number	R-0506
Application	Automotive flow systems, windscreen washing systems, hydraulic as well as industrial air and fluid flow applications.
Material	Polypropylene (PP-TD)
Dimensions [mm]	S1: A-4, B-6, C-7,5, D-33, E-3, F-5, G-6



Product	Reducer elbow connector
Hose inner diameter	6 and 8mm
Product number	K-0608
Application	Automotive flow systems, windscreen washing systems, hydraulic as well as industrial air and fluid flow applications.
Material	Polypropylene (PP-TD)
Dimensions [mm]	S2: A-4, B-6, C-17, D-6, E-8, F-9, G-24



Product	Reducer straight connector
Hose inner diameter	6 and 8mm
Product number	R-0608
Application	Automotive flow systems, windscreen washing systems, hydraulic as well as industrial air and fluid flow applications.
Material	Polypropylene (PP-TD)
Dimensions [mm]	S1: A-5, B-8, C-10, D-38, E-4, F-6, G-7



Product	Reducer straight connector
Hose inner diameter	8 and 10mm
Product number	R-0810
Application	Automotive flow systems, windscreen washing systems, hydraulic as well as industrial air and fluid flow applications.
Material	Polypropylene (PP-TD)
Dimensions [mm]	S1: A-8, B-10, C-11,5, D-38, E-6, F-8, G-10



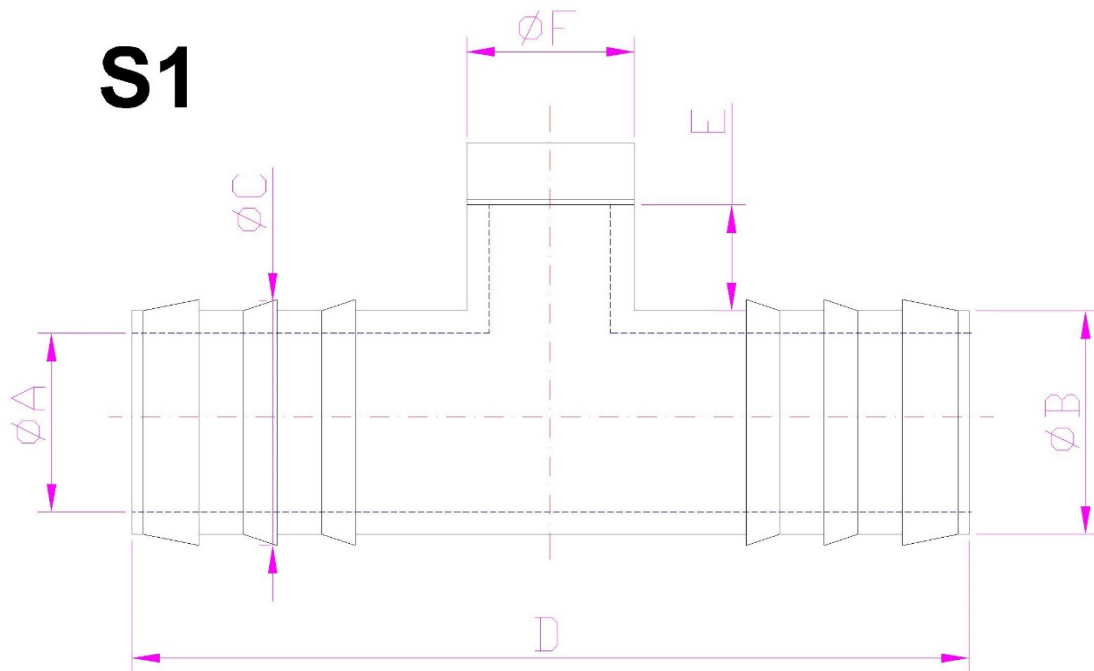
Product	Reducer straight connector
Hose inner diameter	8 and 12mm
Product number	R-0812
Application	Automotive flow systems, windscreen washing systems, hydraulic as well as industrial air and fluid flow applications.
Material	Polypropylene (PP-TD)
Dimensions [mm]	S1: A-9,5, B-12, C-13, D-39, E-6, F-8, G-10



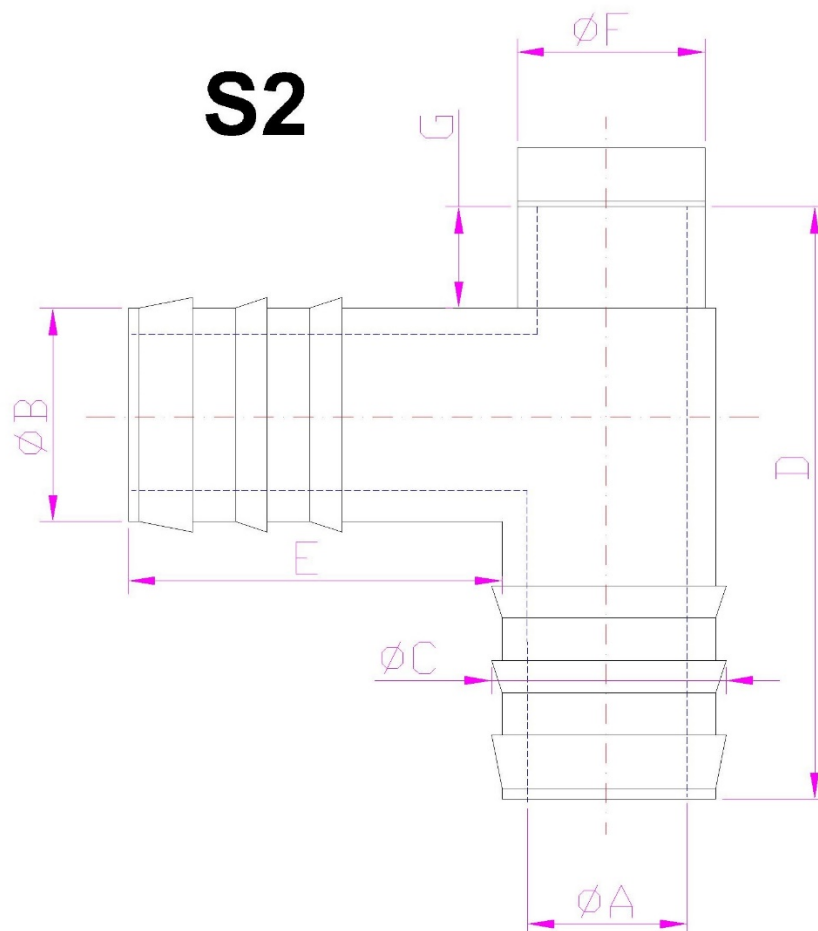
Product	Reducer straight connector
Hose inner diameter	12 and 18mm (1/2" and 3/4")
Product number	R-1218
Application	Automotive, hydraulic as well as industrial air and fluid flow applications.
Material	Polypropylene (PP-TD)
Dimensions [mm]	S1: A-14, B-18, C-19, D-51, E-9, F-12, G-13

## Air bleed connectors

**S1**



**S2**





Product	Air bleed valve screw
Type and size of screw-thread	M10 x 1mm
Product number	I-0015
Application	Automotive, hydraulic as well as industrial air and fluid flow applications.
Material	Polypropylene (PP-TD)



Product	Air bleed elbow connector
Hose inner diameter	18mm(3/4")
Product number	K-30018
Application	Automotive, hydraulic as well as industrial air and fluid flow applications.
Material	Polypropylene (PP-TD)
Dimensions [mm]	S2: A-14, B-18, C-19, D-56, E-30, F-18, G-10



Product	Air bleed straight connector
Hose inner diameter	18mm(3/4")
Product number	L-30018
Application	Automotive, hydraulic as well as industrial air and fluid flow applications.
Material	Polypropylene (PP-TD)
Dimensions [mm]	S1: A-14, B-18, C-19, D-73, E-9, F-18



Product	Air bleed elbow connector
Hose inner diameter	20mm
Product number	K-30020
Application	Automotive, hydraulic as well as industrial air and fluid flow applications.
Material	Polypropylene (PP-TD)
Dimensions [mm]	S2: A-16, B-20, C-22, D-56, E-28, F-16, G-9



Product	Air bleed straight connector
Hose inner diameter	20mm
Product number	L-30020
Application	Automotive, hydraulic as well as industrial air and fluid flow applications.
Material	Polypropylene (PP-TD)
Dimensions [mm]	S1: A-16, B-20, C-22, D-75, E-9, F-16